

Dash Beck Walk

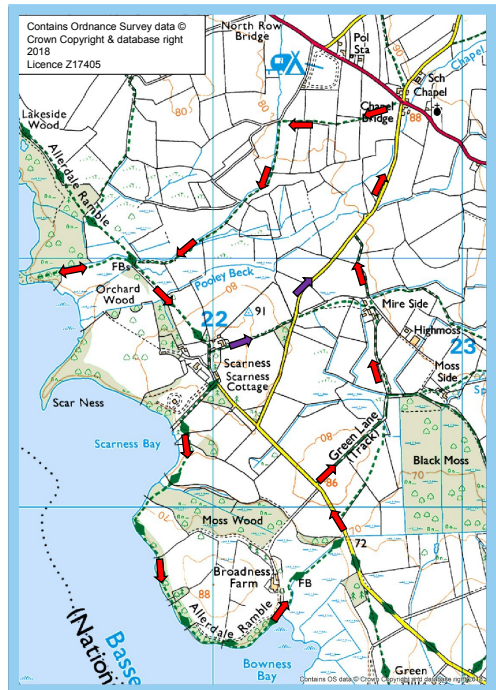
Distance: 2.5 miles (4 km) or 4.2 miles (6.8 km)

Start: Bassenthwaite Church Room on A591

NY 22762 31635

Parking available in Bassenthwaite village. Bus stop at start of walk with Stagecoach services to Keswick & Cockermouth

- 1 From Bassenthwaite Church Room cross the A591 to a footpath on the right of the minor road. Follow the path across fields to meet a track.
- 2 Turn left inside the field and continue on the riverside path, crossing a footbridge.
- 3 At the next footbridge, continue on the footpath for 400 m to reach a quiet area of Bassenthwaite lake shore. After taking in the view, retrace your steps to the footbridge and turn right to follow the fence line towards farm buildings. Cross a small stream then head up the hill to the top-left corner of the field, pass through a gate and follow the path.
- 4 For a shorter walk, turn left through the orchard and follow the path to a minor road. Turn left on the road to return to Bassenthwaite Church Room in 1 km (purple arrows on map).
- 5 For a longer walk, continue straight on to meet a minor road. After 75 m turn right on a path alongside a holiday park. Follow the path as it hugs the lake edge and back up to a minor road.
- 6 Turn left on the road then in 300m turn right onto a track signed 'Parkergate'. Follow this track, keeping left to Mire side farm. Go straight on through the farm buildings, following a track onto a minor road. Turn right to return to Bassenthwaite Church Room.



Dash beck conservation project

The River Derwent and Bassenthwaite Lake is a protected 'Special Area of Conservation'. This is partly due to its salmon and trout populations. Dash beck, which flows into the lake, should be a good area for fish to lay their eggs and young fish to grow, but surveys showed there weren't many fish using this stream.

West Cumbria Rivers Trust undertook a project to improve Dash beck for wildlife and reinstate the footpath to the lakeshore. We are grateful for funding and support from:

Funded by



Environment
Agency



Rivers Corridor Group



Lake District
National Park

Bassenthwaite Rotary club and the landowners.

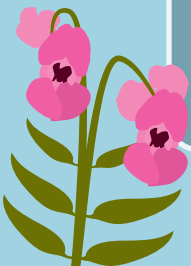
What we did...

Tree management – Fish love overhanging branches and tree roots for shelter and hiding from predators. Trees also shade the water, keeping it cool, but too many trees make the stream too dark for algae to grow and this limits the food for fish and insects. As part of the project we cut back some branches to let light reach the stream.

Fencing – Fences along river banks keep livestock out of rivers. This reduces the amount of manure in the water and prevents livestock trampling the river bank, which can result in silt entering the water and harming fish.

Himalayan balsam control – This pink plant you often see along river banks has been imported to the UK and is now an invasive species. It outcompetes our native vegetation and in the winter it dies back, leaving river banks bare and susceptible to erosion. We control balsam by pulling it out of the ground or strimming it.

Bank stabilisation – Along the footpath you might spot areas where we have installed tree cuttings into the bank. This will trap silt and the willow will grow, protecting the bank from erosion.



West Cumbria Rivers Trust

Caring for our Lakes and Rivers